

# Patricks Road SS P&C Association Structure

Our P&C is broadly divided into three parts based on the type of activity, allowing us to manage each part with appropriate resources and professional experience.



This structure allows our volunteers to focus on the community activities of interest to them. Our volunteers can engage with our school, contribute to the wellbeing of our community, and enjoy the Primary School years with our children.

## Part 1 - Community

Fundraising and events.

The community part. Run by volunteers, with professional support from paid staff.

Key Strategic Areas:

Fundraising

Community

Positive Education

## Part 2 - Business

Tuckshop, Uniform Shop & OSHC.  
Community owned, professionally managed.

The business part. Run by professional paid staff, with volunteers acting in oversight roles.

Key Strategic Areas:

Support Services

Governance

## Part 3 – Major Projects

Resources.

The infrastructure part. Volunteers, supported by professional paid staff, working with the school leadership team on its Strategic Infrastructure Plan and other building, playground and resourcing priorities.

Key Strategic Areas:

Major Projects

---

### P&C ASSOCIATION LEADERSHIP STRUCTURE

---

School Principal

President

Treasurer

Secretary

VP Business

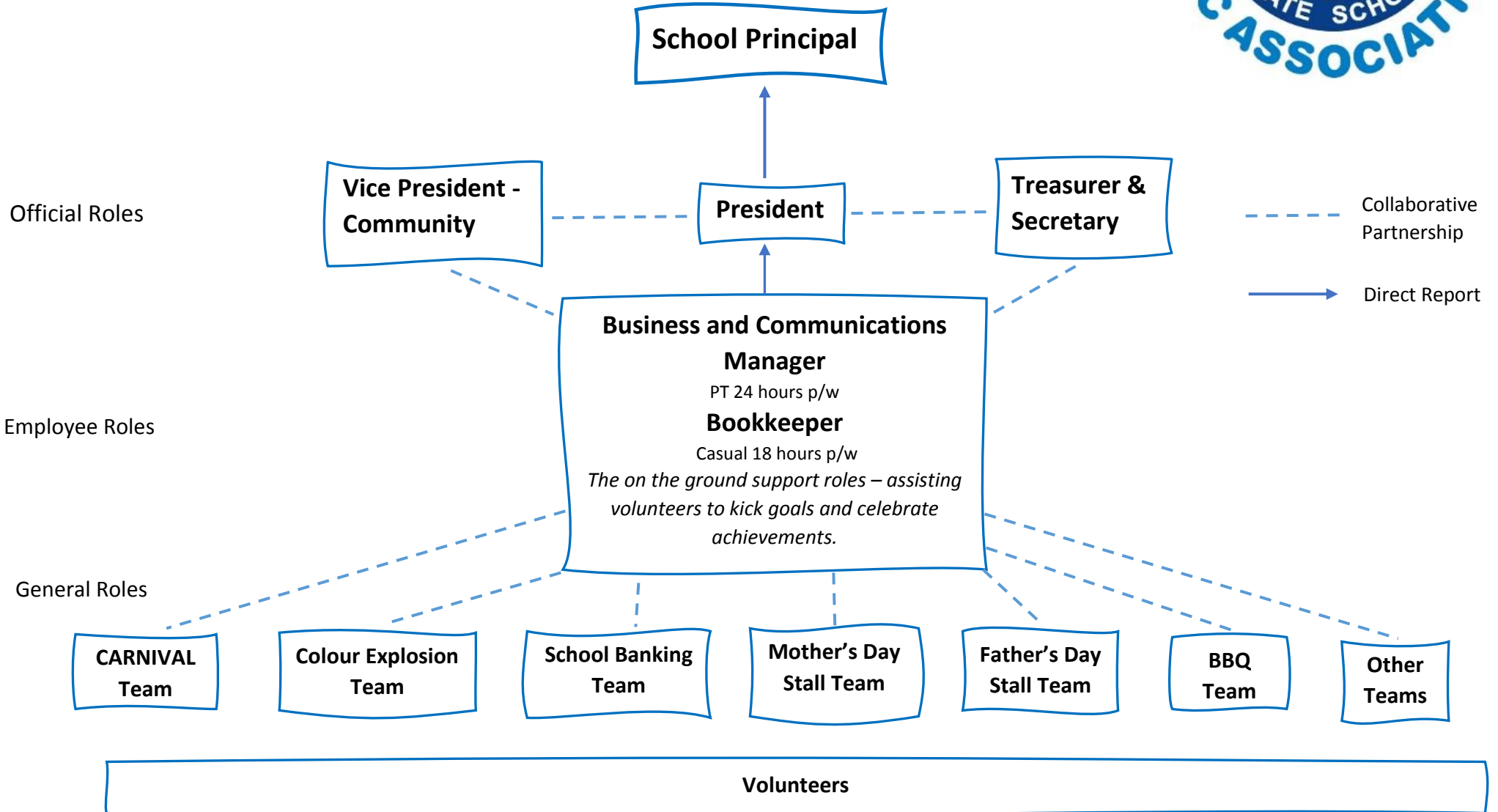
VP Major Projects

VP Community

*Supported by the paid positions of Business and Communications Manager and Association Bookkeeper*

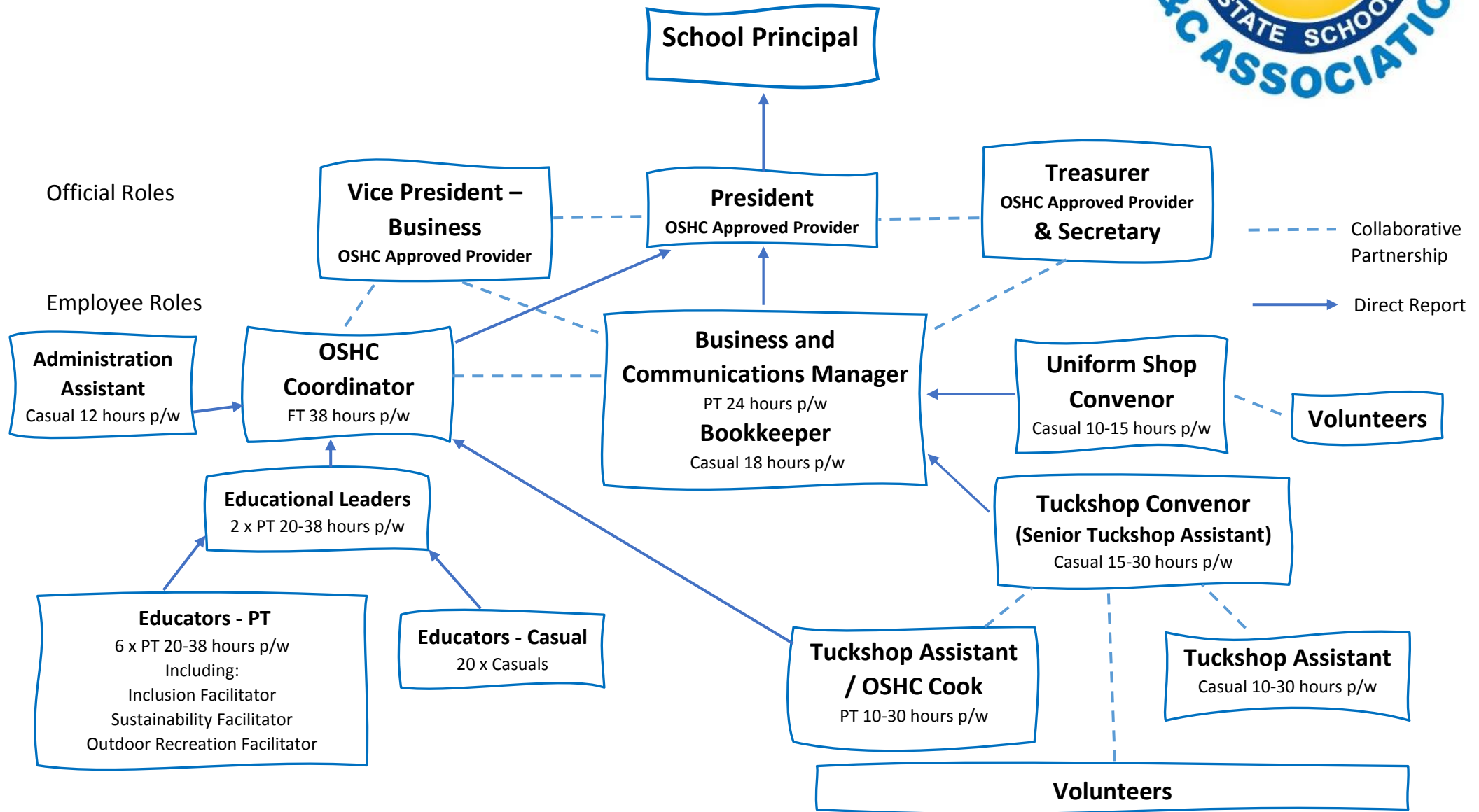
# PRSS P&C Association Structure

## Part 1 - Community



# PRSS P&C Association Structure

## Part 2 – Business



# PRSS P&C Association Structure

## Part 3 – Major Projects

